

JK-T9270D/9280D

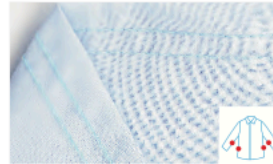
Direct Drive Feed-off-the Arm Machine
Mechatronic Wildely Using



Rear Puller lubricated design



Automatic Needle stopping



Double Needle Feed-off-arm
Machine



Integrated, Power Saving

Model	Needle Gauge	Needle	Stitch No.	Thread No.	Needle Gauge (mm)	Presser Foot Lifting Height (mm)	Light Material	Medium Material	Heavy Duty	Heavier Duty	Max. Speed (mm)	Volume (mm)	Weight (kg)
JK-T9270D-12-Q	1/4,3/16	TV×64 12#	2	4	3.5	8	√				3500	685×535×475	61.5/68.5
JK-T9270D-12-2PL-Q	1/4,3/16	TV×64 12#	2	4	3.5	8	√				3500	685×535×475	61.5/68.5
JK-T9270D-12-2PS-Q	1/4,3/16	TV×64 12#	2	4	3.5	8	√				3500	685×535×475	61.5/68.5
JK-T9270D-12-2PL-Q (for raincoat)	3/16	TV×64 12#	2	4	4.2	8	√				3500	685×535×475	61.5/68.5
JK-T9270D-13-Q	1/8	TV×64 12#	3	6	3.5	8	√				3500	685×535×475	61.5/68.5
JK-T9270D-13-2PL-Q	1/8	TV×64 12#	3	6	3.5	8	√				3500	685×535×475	61.5/68.5
JK-T9270D-22-Q	1/4,3/16	TV×64 14#	2	4	3.5	8		√			3500	685×535×475	61.5/68.5
JK-T9280D-53-Q	1/8	TV×5 21#	3	6	4.2	10			√		3000	685×535×475	61.5/68.5
JK-T9280D-73-2PL-Q	1/8	TV×5 21#	3	6	4.2	10				√	3000	685×535×475	61.5/68.5
JK-T9280D-73-PL-Q	1/8	TV×5 21#	3	6	4.2	10				√	3000	685×535×475	61.5/68.5
JK-T9280D-73-PS-Q	1/8	TV×5 21#	3	6	4.2	10				√	3000	685×535×475	61.5/68.5

Note: PL: rear puller; PS: box puller; JK-T9270D-12-2PL-Q needle gauge is 4.2mm for sewing raincoats.