



Jack Wechat



Jack Sewing Machine Co.,LTD.



Full Automatic Drive Roller Post Bed Sewing Machine With Top And Bottom Feed



JK-6691/6692

JACK SEWING MACHINE CO.,LTD.

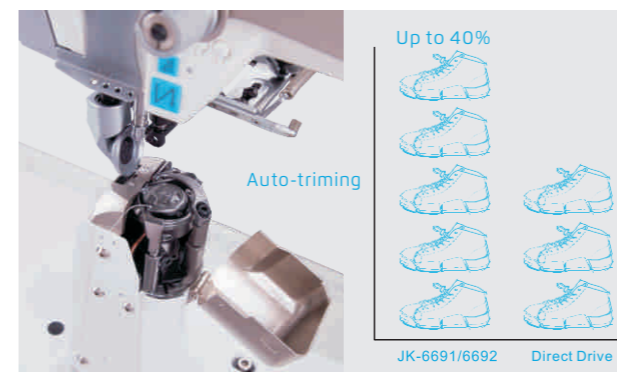
No. 15 South Airport Road, Jiaojiang District, Taizhou, Zhejiang, PRC
TEL: 0086-576-88177782 88177767
FAX: 0086-576-88177787

E-mail: sales@chinajack.com
www.chinajack.com

JK-6691/6692

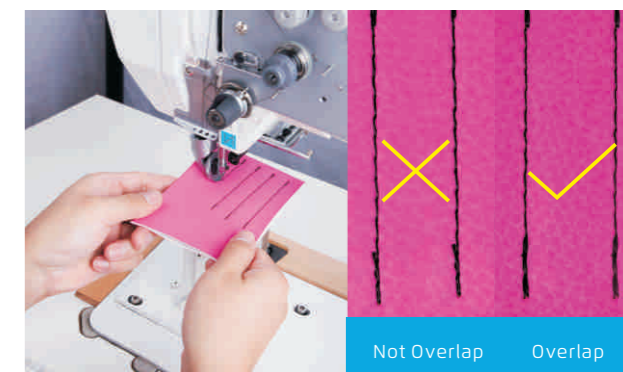
Descriptions:JK-6691/6691 High Speed Computerized Post Bed Roller Feed Sewing Machine
 Feature: Beautiful stitch, quick service, easier to use

The applications of Post Bed Roller Feed Sewing Machine: Bags, gloves, hats, wallets, riding boots, sports shoes, superior leather shoes, etc.



3 Integrated control box, High Efficiency

Standard automatic thread trimmer, automatic reverse, automatic presser foot lifter, efficiency can be increased by more than 40%.



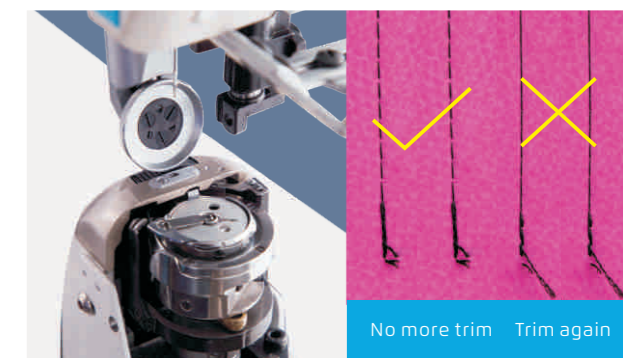
4 Repeated stitch rate is 100%

Repeated stitch rate of front and back stitches are 100%, beautiful stitch, high yield.



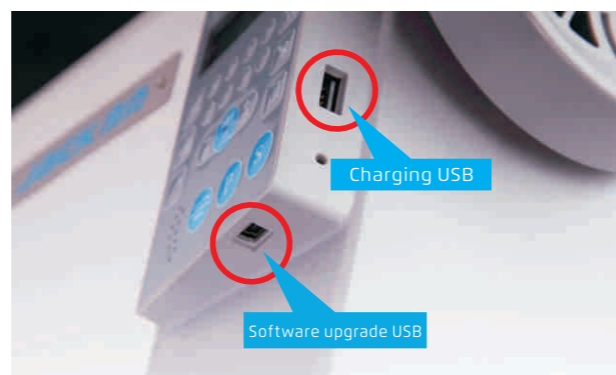
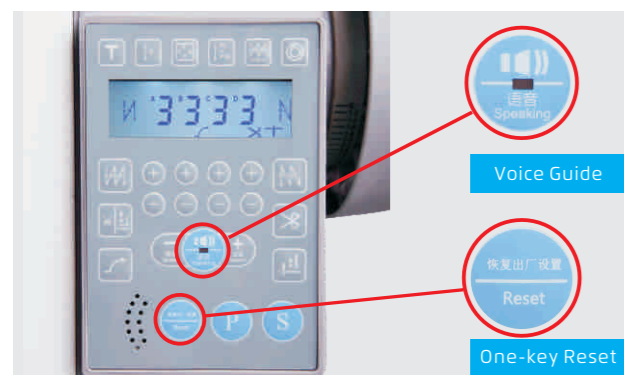
5 Strong Puncture Ability

It can puncture A4 paper of more than 95 layers at one time, and easy to stitch the super thick fabric of labor protection shoes.



6 Short Thread Remaining (optional)

The innovative design of the thread trimming mechanism enables the tail within 3mm after thread trimming, no need to trim the thread tail, saving time and reducing labor costs.



1 Voice Guide; One-key Factory Reset

① Voice guide, Automatic broadcast failure and solution, easy to learn and easy to use;
 ② Able to reset user parameters as needed, more humanization, do not worry about disoperation.

2 Intelligent dual USB interface

With standard charging and software upgrade USB port, it is very convenient to upgrade the electronic control software later.

Technical Parameters

Model	Max. Speed (S.p.m)	Needle	Presser Foot Lifter Height (mm)	Max. Stitch Length (mm)	Needle Bar Stroke (mm)	Automatic Thread Trimmer	Auto Backstitch	Auto Presser Foot Lifter	Short Tail	Auto Reverse	Volume (mm)	Weight (kg)
JK-6691	3000	INDPX5#16	7/12	5	41	✓	✓	✓			812×375×724	71
JK-6691-X	3000	INDPX5#16	7/12	5	41	✓	✓	✓	✓		812×375×724	71
JK-6691-1	3000	INDPX5#16	7/12	5	41	✓	✓	✓		✓	812×375×724	71
JK-6691-1X	3000	INDPX5#16	7/12	5	41	✓	✓	✓	✓	✓	812×375×724	71
JK-6692	2000	INDPX5#16	7/12	5	41	✓	✓	✓			812×375×724	72
JK-6692-1	2000	INDPX5#16	7/12	5	41	✓	✓	✓		✓	812×375×724	72